

AFT SERIES

Smart 6-Axis Force / Torque Sensor



AFT200-D80-C, EC

Features

- Smart 6-axis force/torque sensor
- All-in-one sensor (No additional amplifier)
- Digital output communications (C-CAN, EC-EtherCAT)
- Inertial measurement unit (IMU) integrated
- Collaborative robot, industry application, automation

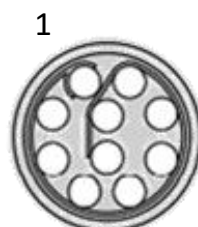


Specification table

Index	Unit	Value
Operating voltage (CAN)	VDC	5 (Max 12V)
Operating voltage (EtherCAT)	VDC	12 (Max 24V)
Nominal force range (F_{XYZN})	N	200
Nominal torque range (T_{XYZN})	Nm	15
Limit force (F_{XYZL})	N	300
Breaking force (xyz)	N	500
Limit torque (T_{XYZL})	Nm	20
Breaking torque (xy / z)	Nm	25 / 45
Resolution (F_{XYZ})	N	0.4
Resolution (T_{XYZ})	Nm	0.025
Maximum Sample rate	Hz	1,000
Dimensions	mm	D80 x H20.5
Weight	g	236
Operating temperature		10-50 °C
Interfaces		CAN, EtherCAT
Connector		For User: CAN_H / CAN_L / VCC / GND ODU G40B0C-P10LCC9-0000

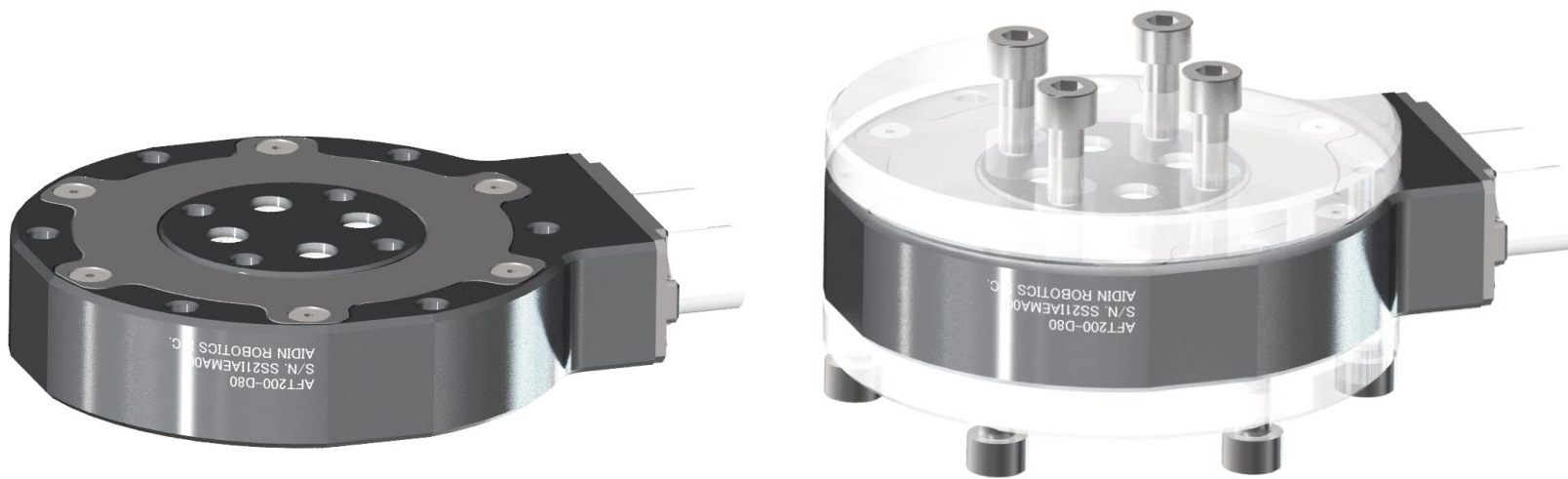
* Signal noise is defined as the standard deviation of typical on second no-load signal

Pin out (CAN)



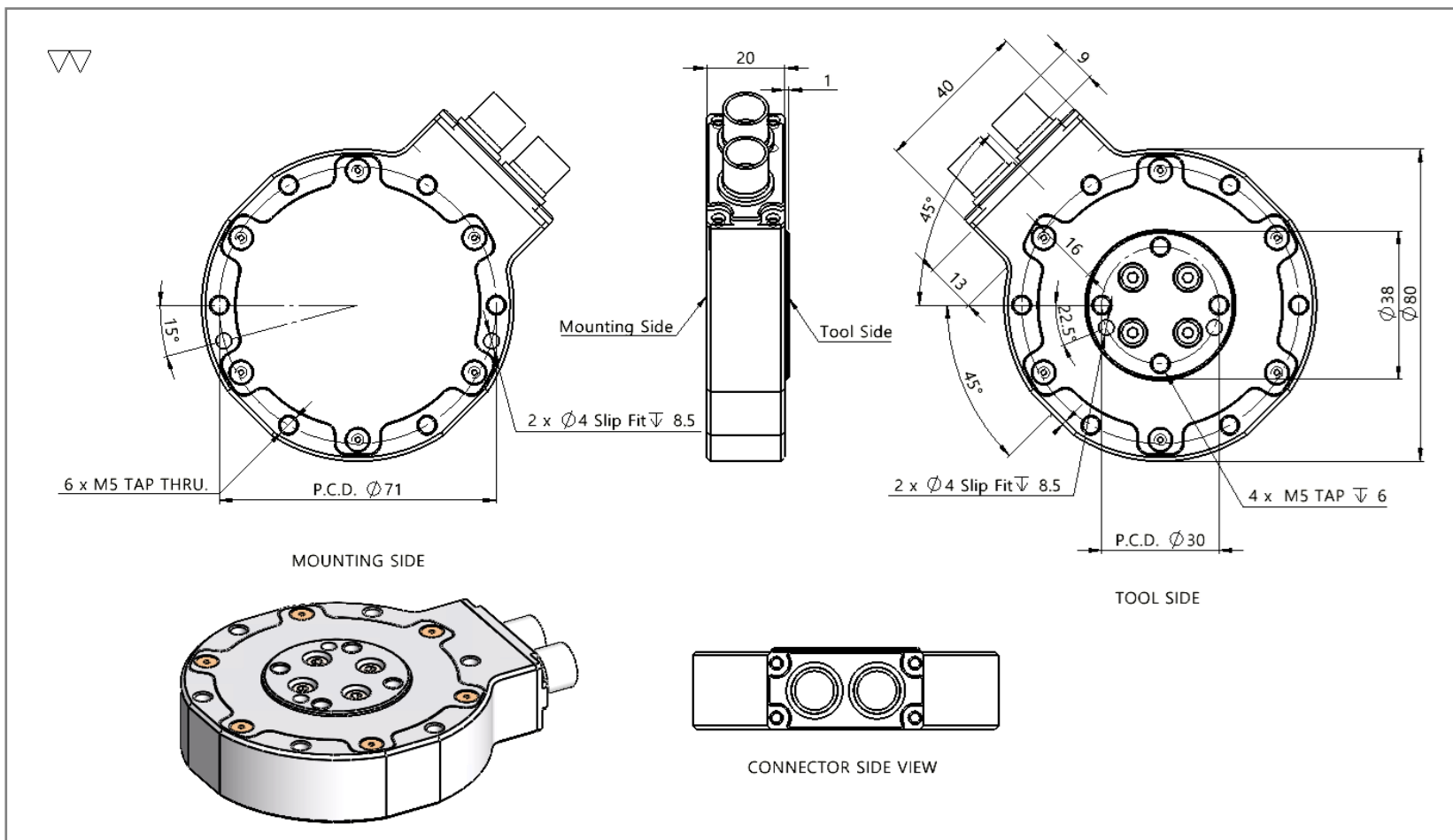
- 1 – NC
- 2 – 5V
- 3 – GND
- 4 – NC
- 5 – CAN_HIGH
- 6 – CAN_LOW
- 7 – NC
- 8 – NC
- 9 – NC
- 10 – NC

Bolting example



*Transparent parts are user part examples

Drawing



AIDIN ROBOTICS Inc.

(주) 에이딘로보틱스